

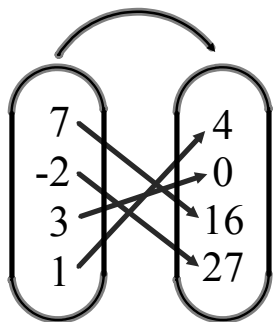
Algebra II

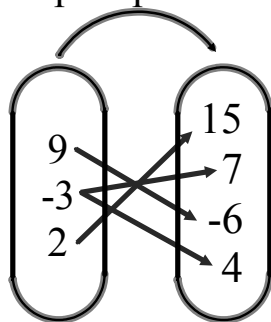
G-4

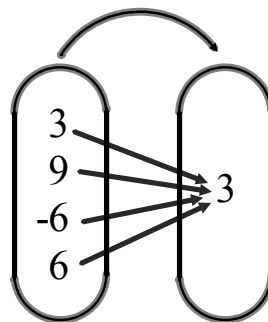
Functions

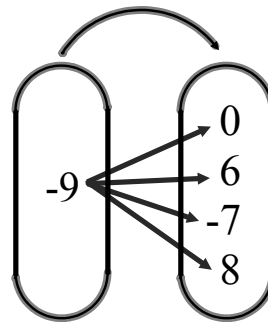
Function -

Which of the following Maps represents a function?

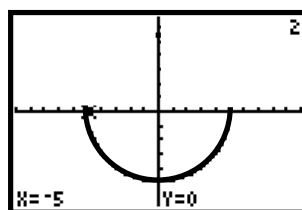
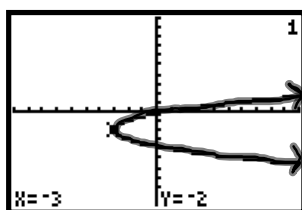
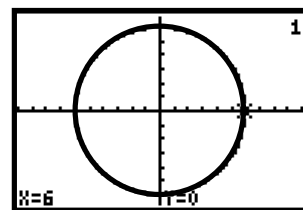
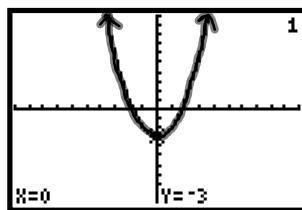
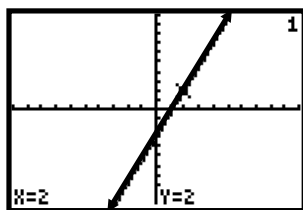








Which of the following Graphs represents a function?



Sample Problems

Map

~~Graph~~ each relation. State whether or not it is a function. (pg. 156)

1) $\{ (1, 2), (2, 0), (1, 1) \}$

Map

The domains D and rules of some functions are given. ~~Find the range of~~
each function. (pg. 144)

1) $F: x \rightarrow 3 - 2x ; \quad D = \{0, 1, 2, 3\}$

Assignment:
Handout
for
Chapter G-4

Follow all instructions on the handout!

(Needed: 1 sheet of graph paper)